



15 Moo14, Debaratana Rd., Bangpleeyai , Bangplee, Samutprakarn 10540 Thailand

T : +66 (2) 316-7060 | F : +66 (2) 316-0761
Email : Duraments@tstnoble.com

DURAMENTS



2021
KITCHEN
CATALOGUE

**COMPLEMENTARY,
DURABLE
KITCHEN TOOLS.**



ABOUT US

In 2018, we launched out complementary kitchen equipment brand, Duraments. Inspired by the Latin word *dūrābilis*, which means lasting and permanent, Duraments is a line of durable, versatile kitchen tools designed to support all commercial kitchen operations.

Our product line was borne of frustration over incurring high import duties for low-maintenance, fuss-free kitchen equipment. It just did not make sense to transfer these costs over to our customers. We knew that by creating a line of efficient, affordable kitchen equipment, our customers could use those savings to invest and upgrade core kitchen equipment.

“Just think: touch-screen combi ovens, one-touch vacuum machines, automatic bratt pans or a brand-new sous-vide machine for your kitchen”

We are not driven by cost alone. Quality is always our utmost mission. Each product from the Duraments kitchen equipment line is designed to be affordable and durable, yet functional. Most of our products have been tested in UL and SGS facilities and adhere to international food safety standards such as: FDA, NSF, EU 10/2011.

Our products have been sold to international 5-star hotel groups across Thailand, including Four Seasons, Marriott and Kempinski.

Duraments



CONTENTS



HYGIENE EQUIPMENT

- KNEE OPERATED HAND WASH SINK 6
- ROUND CONTAINER BIN 7
- MOBILE GARBAGE BIN 8



SUPPLEMENTARY EQUIPMENT

- COFFEE KNOCK BOX 9
- FLOUR BIN 10
- DISH CADDY 11
- ICE CADDY 12
- SOAP DISPENSER 13
- TISSUE DISPENSOR 13
- GLASS RINSER 14
- 4 TIER SLOTTED SHELF 15



WARE WASHING EQUIPMENT

- PRE-RINSE FAUCET 17

KNEE OPERATED HANDWASH SINK



Features

- One piece 1.35 mm thick 304 stainless steel pressed worktop completely eliminates any water leakage.
- Entire sink body and back panel is welded smoothly into one seamless unit for added strength.
- Coved corners on outer body for safety and easy cleaning.
- 152 mm depth sink bowl to prevent water from splashing out.
- 5 pre-fixed holes on back panel for easy mounting of handwash sink on kitchen walls.
- Gooseneck faucet is made from brass and plated in polished chrome.
- Premixed valve ensures water temperature can be adjusted. (hot & cold)
- Flip front panel for easy servicing.
- All accessories for water connection are included.
- No assembly required.

Technical Data

Model : DH-KNSH

Overall Dimensions (L×W×H) :
453×383×520 mmH

Body Material :

304 stainless steel,
Satin Finish

Net Weight : 8 Kg

Accessories Included :
Gooseneck Faucet

Test Report :



Features

- Body is constructed in 1.35 mm thick 304 stainless steel, satin finish.
- Entire sink body and back panel is welded smoothly into one seamless unit for added strength.
- Coved corners on outer body for safety and easy cleaning.
- 152 mm depth sink bowl to prevent water from splashing out.
- 5 pre-fixed holes on back panel for easy mounting of handwash sink on kitchen walls.
- Sensor faucet is made from brass in polished chrome finish.
- Premixed valve ensures water temperature can be adjusted. (hot & cold)
- All accessories for water connection are included.
- No assembly required.

Technical Data

Model : DH-EHSH

Overall Dimensions (L×W×H) :
453×383×520 mmH

Body Material :

304 stainless steel,
Satin Finish

Net Weight : 8 Kg

Accessories Included :
Sensor Faucet

Test Report :



Wall Mount Soap Dispenser

Model : DH-WSD

Body Material : 304 stainless steel

Capacity : 1,000 ml



Dust Bin

Model : DH-DB

Body Material : Polypropylene (PP)

Capacity : 15 L



Built In Soap Dispenser

Model : DH-BSD

Body Material :

304 stainless steel
& polypropylene (PP)

Capacity : 300 ml



Wall Mount Dust Bin

Model : DH-WDB

Body Material : Polypropylene (PP)

& stainless steel wall mount kit

Capacity : 15 L



Wall Mount Tissue Dispenser

Model : DH-WTD

Body Material : 304 stainless steel

Capacity : 250 C-Fold or 300 Multi-fold
paper towels

OPTIONAL ACCESSORIES FOR HANDWASH SINK





ROUND CONTAINER BIN

Features

- Constructed from food-grade polypropylene (PP)
- Never rust and warp
- Strong molded-in handle designed for heavy-duty
- Snap lock sealed lid prevents odour and leakage.
- Dolly comes with pedal control for easy disassemble of container from dolly.
- Comes with 5 swivel castors for easy transportation.

Technical Data

Model : DS-RCB76

Overall Dimensions (L×W×H) :

498 × 584 mmH

Capacity : 76 L

Body Material :

Polypropylene (PP)

Castors Material :

Polypropylene (PP)

Color : Grey

Model : DS-RCB120

Overall Dimensions (L×W×H) :

557 × 693 mmH

Capacity : 120 L

Body Material :

Polypropylene (PP)

Castors Material :

Polypropylene (PP)

Color : Grey



MOBILE GARBAGE BIN (FOOT PEDAL)

Features

- Interior and exterior constructed from 1mm thick stainless steel.
- Rounded corners for easy cleaning.
- Body is fully welded to eliminate any leaks.
- Lid is removable and can be clipped on the side.
- Lid with internal rubber lining minimizes closing sound.
- Comes with castors for easy maneuver around kitchen.
- Comes with a foot pedal for operation.

Technical Data

Model : DH-MGB50

Overall Dimensions (L×W×H) :

350 × 600 mmH

Capacity : 50 L

Body Material :

304 stainless steel,

1 mm thick

Net Weight : 6.9 Kg

Model : DH-MGB100

Overall Dimensions (L×W×H) :

450 × 750 mmH

Capacity : 100 L

Body Material :

304 stainless steel,

1 mm thick

Net Weight : 9.7 Kg

OPTIONAL ACCESSORIES
FOR ROUND CONTAINER BIN



76L Lid
Model : DS-RCB76-L
Body Material :
Polypropylene (PP)



120L Lid
Model : DS-RCB120-L
Body Material :
Polypropylene (PP)



Dolly
Model : DS-RCB-D
Body Material :
Polypropylene (PP)





COFFEE KNOCK BOX

Features

- To dispose coffee grounds.
- Bar material is made from 304 stainless steel and wrapped in food grade PE rubber.
- Bar is removable for easy cleaning.
- Comes with rubber gasket and bar for minimal noise impact.
- Holds up to 35 discarded pucks.
- Closed bottom suitable for coffee counter applications.

Technical Data

Model : DS-CKB

Dimensions (L×W×H) : 265 × 162 × 100 mmH

Capacity : 4 L

Body Material : 304 stainless steel

Bar Material : Polyethylene (PE) wrapped in PE rubber.



Front swivel
castor with brake

FLOUR BIN

Features

- Lightweight body constructed from food grade polypropylene (PP).
- Ingredients are visible through clear lid.
- Can hold up to 63 Kg of flour and 77 Kg of sugar.
- Easy to move with 4 casters with lock on front castors.
- Durable and robust build.
- Scoop is included.

Technical Data

Model : DS-FB81

Dimensions (L×W×H) : 711 × 333 × 743 mmH

Capacity : 81 L

Body Material : Polypropylene (PP)

Lid Material : Polycarbonate (PC)

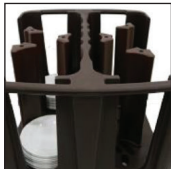
Castor Material : Thermoplastic Rubber (TPR)

Color : White

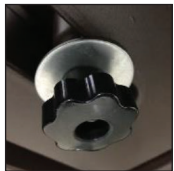




Adjustments column divider



Molded-in handles



One-handed adjustment



Back non-swivel castor



Front swivel castor with brake

DISH CADDY

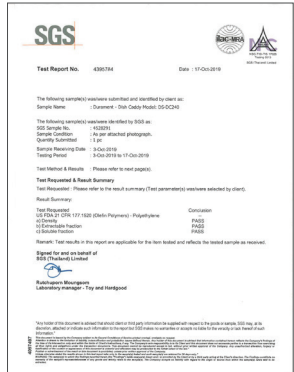
Features

- Can hold a wide variety of plates ranging from 4.5" – 13" (11-33 cm.) sizes.
- Easy one-handed adjustments beneath caddy allows for flexibility to maximize plate loading capacity.
- Outer and inner body is constructed from one-piece double wall high-density polyethylene (PE) for durability and added strength.
- Smooth rounded corners for easy removable of any bacteria build up or dust.
- Dividers are removable for easy cleaning.
- Lightweight design with molded-in handles on each side make it easy to maneuver in tight kitchen spaces.
- Plates are stored 28.5 cm. above floor surface for added hygiene.
- Castors are constructed with heavy-duty polyurethane (PU) back castors come with breaks.
- Will not rust, break, peel, chip or crack.
- No assembly required

Technical Data

Model : DS-DC240
Dimensions (L×W×H) :
930 × 720 × 800 mmH
Capacity : Up to 300 plates
Columns per Caddy : 6
No. of Configurations : 6
Body Material : Polyethylene (PE)
Castors Material : Polyurethane (PU)
Color : Dusky Brown

Test Report :



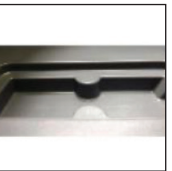
Handle



Drain shelf



Faucet



Recessed well



Front swivel Castor with brake



Back non-swivel castor

ICE CADDY

Features

- Outer Body is constructed from double wall, high-density polyethylene (PE) for durability and added strength.
- Inner body is constructed from thick polyurethane (PU) foam insulation, to hold ice for longer periods.
- Castor is constructed with heavy-duty polyurethane (PU).
- Sliding lid with moulded-in handle for sturdiness and smooth maneuvering.
- Recessed interior well with drain shelf separates ice from melted water to ensure long-lasting ice quality and, extend storage times.
- Recessed, leak proof faucet is located at the front of each unit for quick drain.
- Suitable to use inside kitchens or in outdoor settings.
- Will not rust, break or crack
- Super easy to clean
- No assembly required

Technical Data

Model : DS-IC110
Dimensions (L×W×H) :
800 × 585 × 745 mmH
Capacity : 110L
Body Material : Polyethylene (PE)
Castors Material : Polyurethane (PU)
Color : Graham Grey

Test Report :





SOAP DISPENSER

Features

- Deck mount type
- 2 cc. per pump output
- Pumps smoothly

Technical Data

Model : DS-SD500
Dimensions (L×H) :
 57 x 150 mmH
Capacity : 500 ML
Pump Material :
 304 stainless steel
 (Mirror Finish)
Bottle Material :
 Polyethylene (PE)



GLASS RINSER

Features

- Rinser head made of stainless steel 304 18 Gauge.
- Drip tray made of stainless steel.
- Cold water rinsing
- Threaded brass drain
- Easy to chill glass by using invert glass push down on sprayer.
- Space saving size
- Robust and durable
- Drip Tray available as add on

GLASS RINSER CONFIGURATION OPTION



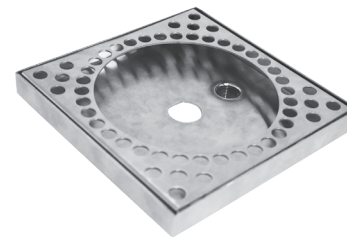
TISSUE DISPENSER

Features

- Suitable for front of house dining environments.
- Recessed mounting
- Body made from 304 stainless steel plated in polished chrome.
- Can hold up to 70 pieces of tissue paper

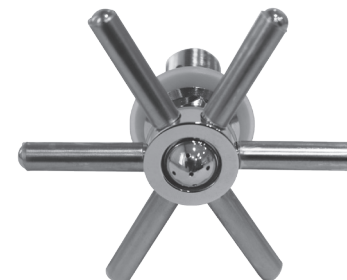
Technical Data

Model : DS-RTD
Dimensions (L×W×H) :
 298 x 157 x 53 mmH
Capacity :
 Up to 70 pieces of tissue
Body Material :
 304 stainless steel



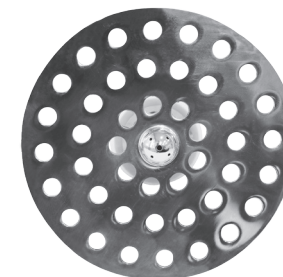
Rinser Tray

Model : DS-GRT
Dimensions (L×W×H) : 162 x 162 x 20 mmH
Body Material : 304 stainless steel



Star Rinser

Model : DS-GRS
Dimensions : 152 mm diameter
Body Material : 304 stainless steel



Perforated Rinser

Model : DS-GRP
Dimensions : 152 mm diameter
Body Material : 304 stainless steel

COLOUR OPTION FOR TISSUE DISPENSER

- Black finish





4 TIER SLOTTED SHELF

Features

- Durable and robust
 - Multi environments use from -38°C to 88°C
 - Ideal for using in cold, frozen or humid environments.
 - Shelves can adjusted at 100 mm increments to maximize storage space.
- Rust and corrosion resistance.
 - Post and shelf are made of steel core and coated with a thick Polypropylene surface.
 - Quick and easy assembly
 - Wide range of shelf length available (910, 1060, 1220, 1370, 1525 and 1825 mm)

OPTIONAL ACCESSORIES FOR SHELVES

- Mobile option (M)
- Corner connectors for L-shaped shelving configuration (CC)
- Shared post available to extend entire shelving length. (SP)
- Solid shelf option (SS)

Technical Data

Model	Dimensions (L×W×H)	Loading Capacity (Per Shelf)	Body Material	Color
DS-4TSSP362164	910 x 530 x 1600 mmH	300 Kg	Food grade Polypropylene (PP)	Grey
DS-4TSSP422164	1060 x 530 x 1600 mmH			
DS-4TSSP482164	1220 x 530 x 1600 mmH			
DS-4TSSP542164	1370 x 530 x 1600 mmH	250 Kg		
DS-4TSSP602164	1525 x 530 x 1600 mmH			
DS-4TSSP722164	1825 x 530 x 1600 mmH	200 Kg		





PRE-RINSE FAUCET

Features

- Deck mount pre-rinse faucet to be installed on sink counters.
- Exterior body made from brass and plated in polished chrome.
- Main faucet body is forged in 1 piece to eliminate any leaks.
- Rigid quarter-turn cartridge is made entirely from brass and equipped with spring checks to prevent cross flow of water.
- 44" flexible stainless steel hose comes with heat resistant handle and pull down ring set.
- Lever handles comes with color code (Red / Blue).
- Double hole 4" base for added stability and strength.
- Comes with two types of the Spray Valves.
 - Low Flow Spray Value 0.73 GPM
 - Standard Spray Value 1.42 GPM

Technical Data

Model : DW-PRF4

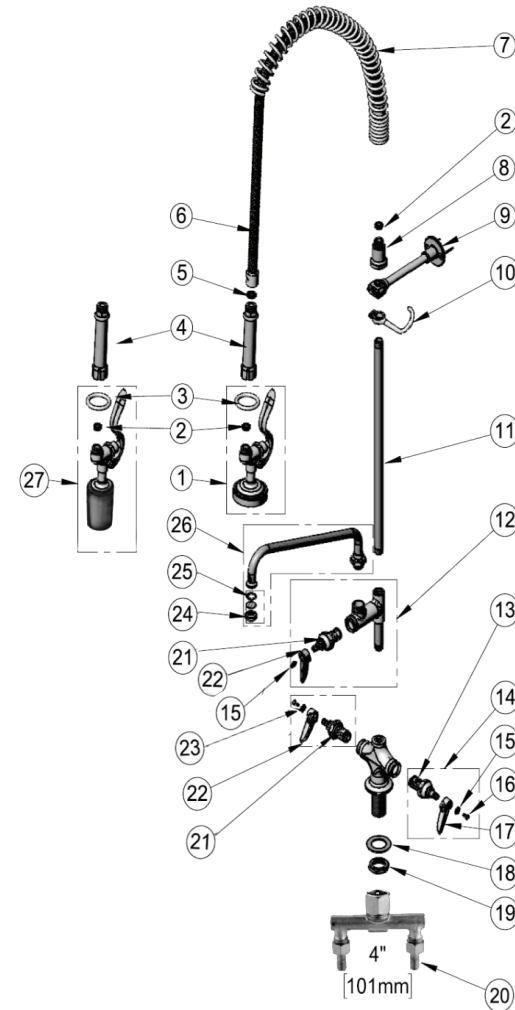
Dimensions : 4" (101.60 mm)

Body Material : 304 stainless steel and Brass

Pressure : 20 ~100 PSI

Water Temperature : 4~100°C

Flow Rate : 0.73 GMP-1.42 GPM @ 60 PSI



DW-PRF4

Technical Specification

1. 1.42 GPM Standard spray valve
2. #27 Washer (for hose & spray valve)
3. Pull down ring
4. Heat resistant handle
5. Washer (for hose barrel)
6. 44" Flexible stainless steel hose
7. Overhead spring
8. Spring body
9. 6" Wall bracket
10. Finger hook
11. 3/8" npt x 18" riser
12. Add-on faucet (model : sf)
13. Brass quarter-turn compression cartridge, ltc w/ spring checks (1 of 2 parts)
14. Brass quarter-turn compression cartridge, ltc w/ spring checks, handle, color code & screw (2 of 2 parts)
15. Color code (blue – cold water)
16. Lever handle screw
17. Lever handle
18. Lock washer
19. Lock nut
20. 4" Double hole brass base
21. Brass quarter-turn compression cartridge, rtc w/ spring checks (1 of 2 parts)
22. Brass quarter-turn compression cartridge, rtc w/ spring checks, handle, color code & screw (2 of 2 parts)
23. Color code (red – hot water)
24. Stream regulator outlet
25. Nozzle tip washer
26. 12" Swing faucet (model : DW-SF12)
27. 0.73 GPM Low flow spray valve

OPTIONAL ACCESSORIES FOR PRE-RINSE FAUCET



Swing Faucet

Model : DW-SF12

Dimensions : 12" (305 mm)

Body Material : 304 stainless steel





This catalogue is the property of TST Noble Co. Ltd.
Any use or reproduction of this catalogue for whatever reasons
or by any means is expressly and strictly prohibited and shall
be prosecuted under the laws of Thailand.



Complementary durable kitchen tools